



Enchanted Lake Residents Association 2023-2024 Annual Report to Members



September 28, 2024





ELRA Board of Directors

Greg Colbert, *Acting President*

Gus Gustavson, *Treasurer*

Margaret Novack, *Secretary*

Mike Compton, *Security Officer*

Linda Jenks, *Lake Environment*

Connie Jewell, *Community Relations*

Todd Jewell, *Audit*

Alan Richardson, *Finance and Audit*

Fran Tannen, *Community Relations*

Cindy Turner, *Lake Environment*





Nominees for Election to the Board

- Greg Colbert
- Fran Tannen
- Cindy Turner


- Nominations from the floor?



President's Message

PURPOSE


ELRA operates exclusively for purposes of owning, managing, operating, and maintaining Enchanted Lake, to sponsor and organize social activities for its members and to conduct any and all activities in support of these purposes.





President's Report

This year your Board focused primarily on:

- Improved lake trash cleaning/maintenance
 - Continuing to monitor and support water quality
 - Sampling and testing quarterly water quality throughout the lake, canal, and at Kailua Bay
 - Maintaining lake health
 - Interactions with City and County regarding improved berm openings
 - Implementing dredging operations
 - Greg Colbert will provide a status report
- 



Activity Reports



Lake Environment and Berm Openings

Linda Jenks and Cindy Turner



Lake Environment

General Lake Conditions

- Most of the year the lake had very low salinity
 - Less than normal algae growth, until August berm opening
- Popular lake activities
 - Catch-and-release fishing
 - Kayaking
 - Stand up paddleboarding
 - Six-person canoe team paddling practice



Lake Environment

Barracuda in the lake

- Reported incidents:
 - Ramming a 6-man canoe
 - Jumping into a canoe
 - Killing native birds
- New lake rule to “catch & keep” over 24” in length
- Long-term, best solution is regular berm openings that allow large barracuda to migrate to the ocean



Berm Openings

Berm Openings

Why do we need them?

- Minimize flood risks
- Improve near-shore fisheries
- Mimic natural hydrology
- Increase salinity of lake
- Maintain a better ecosystem
- Improve lake water quality



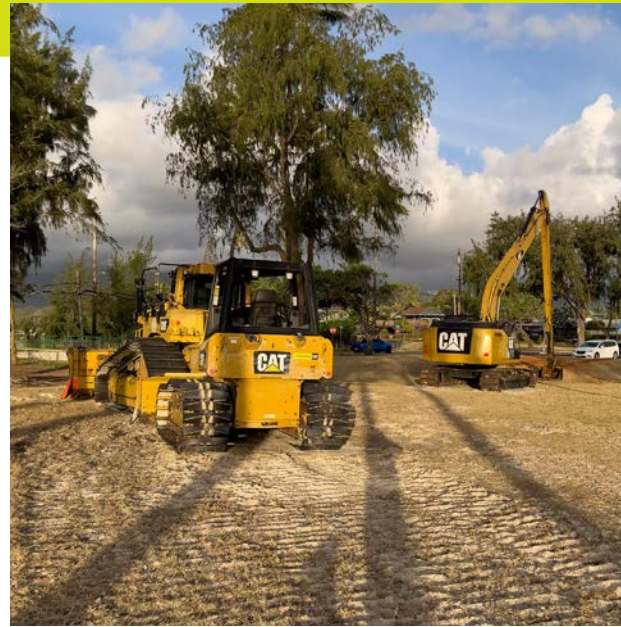
Berm Openings

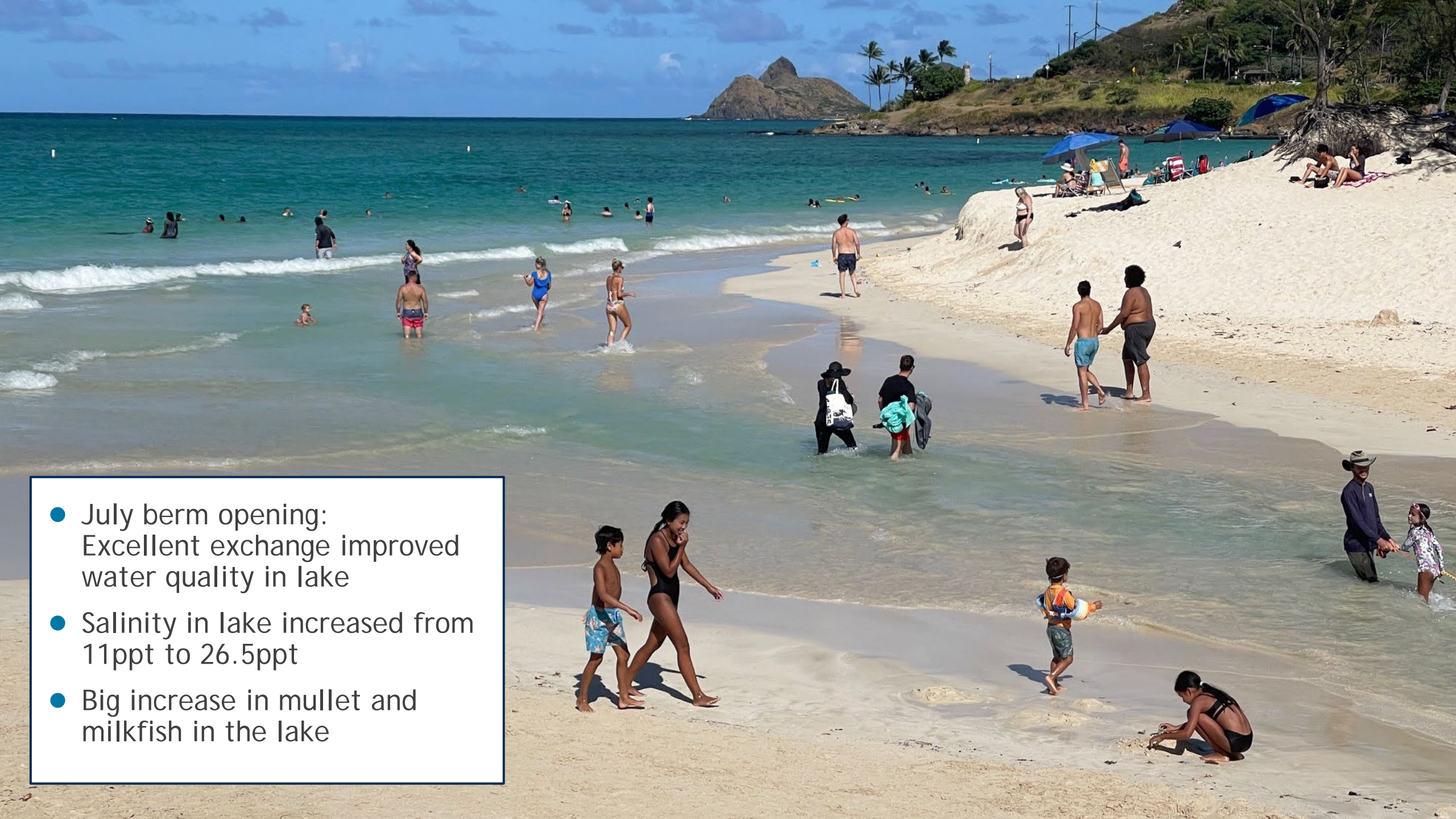
- City given list of opening dates each month to optimize water exchange
- Met with DFM twice to advocate for regular openings
- 5 openings in last 12 months
 - 4 due to flood risk
 - 1 stream maintenance



Berm Openings

- Stream Maintenance and Opening in July
 - Multiple days of work before opening
 - Removed 3 large ironwoods partially buried since Jan 2022
 - Moved mountains of sand off the beach
 - Open to bay for 14 days July 30 to August 12



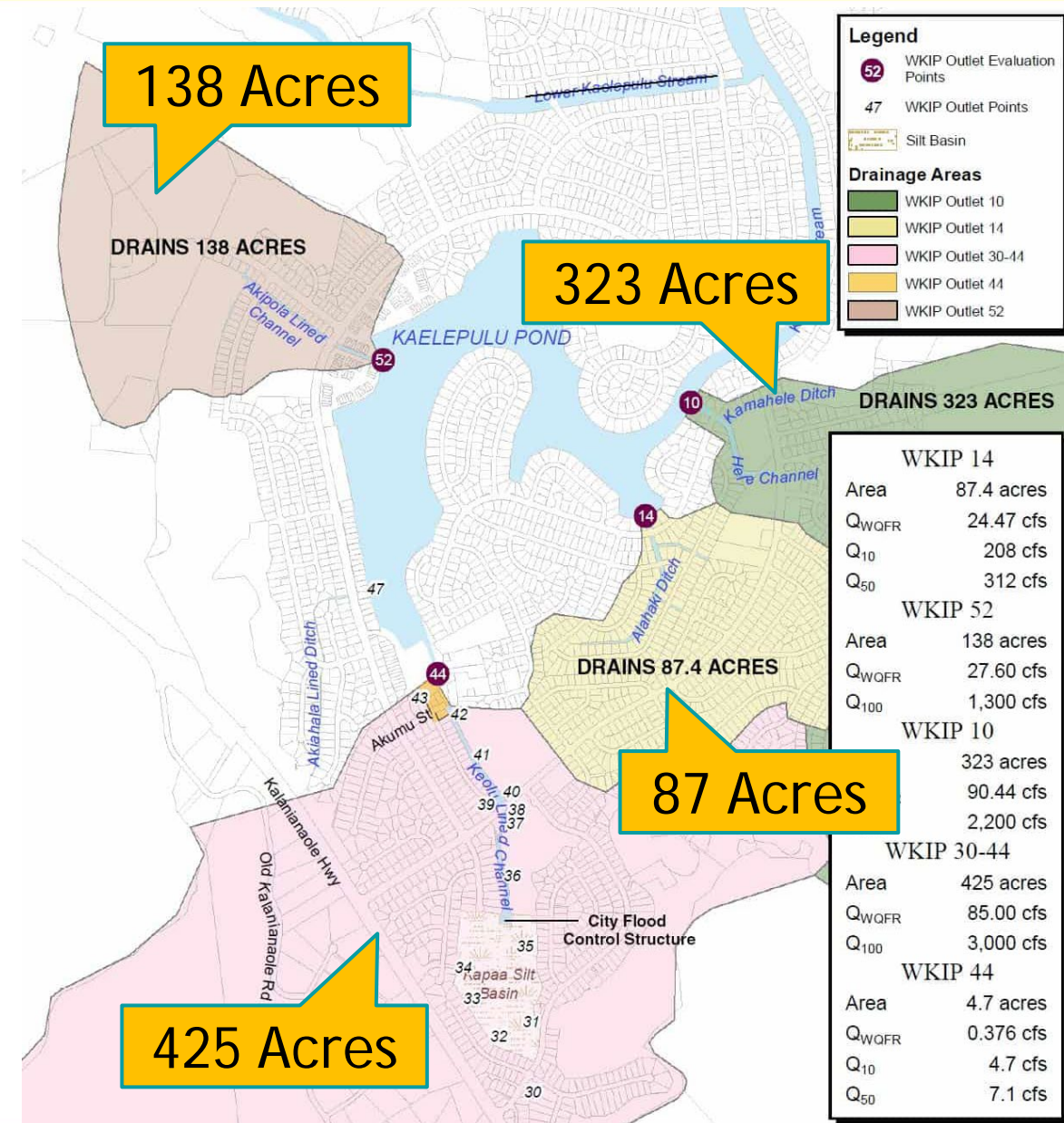


- July berm opening:
Excellent exchange improved
water quality in lake
- Salinity in lake increased from
11ppt to 26.5ppt
- Big increase in mullet and
milkfish in the lake

Stormwater Runoff

4 major drain channels deposit storm water from over 970 acres into lake

- Gravel, sediment, trash, coconuts, greenwaste wash into lake
- Channels need more frequent cleaning
- Street sweeping can help



Construction Runoff

- Muddy runoff from construction is major cause of sedimentation and algae blooms in lake
- Regulations in place that could prevent
- Fines need to be higher and enforced
- Violations need to be reported

Clearing in Olomana Heights continues to be major source of stormwater pollution

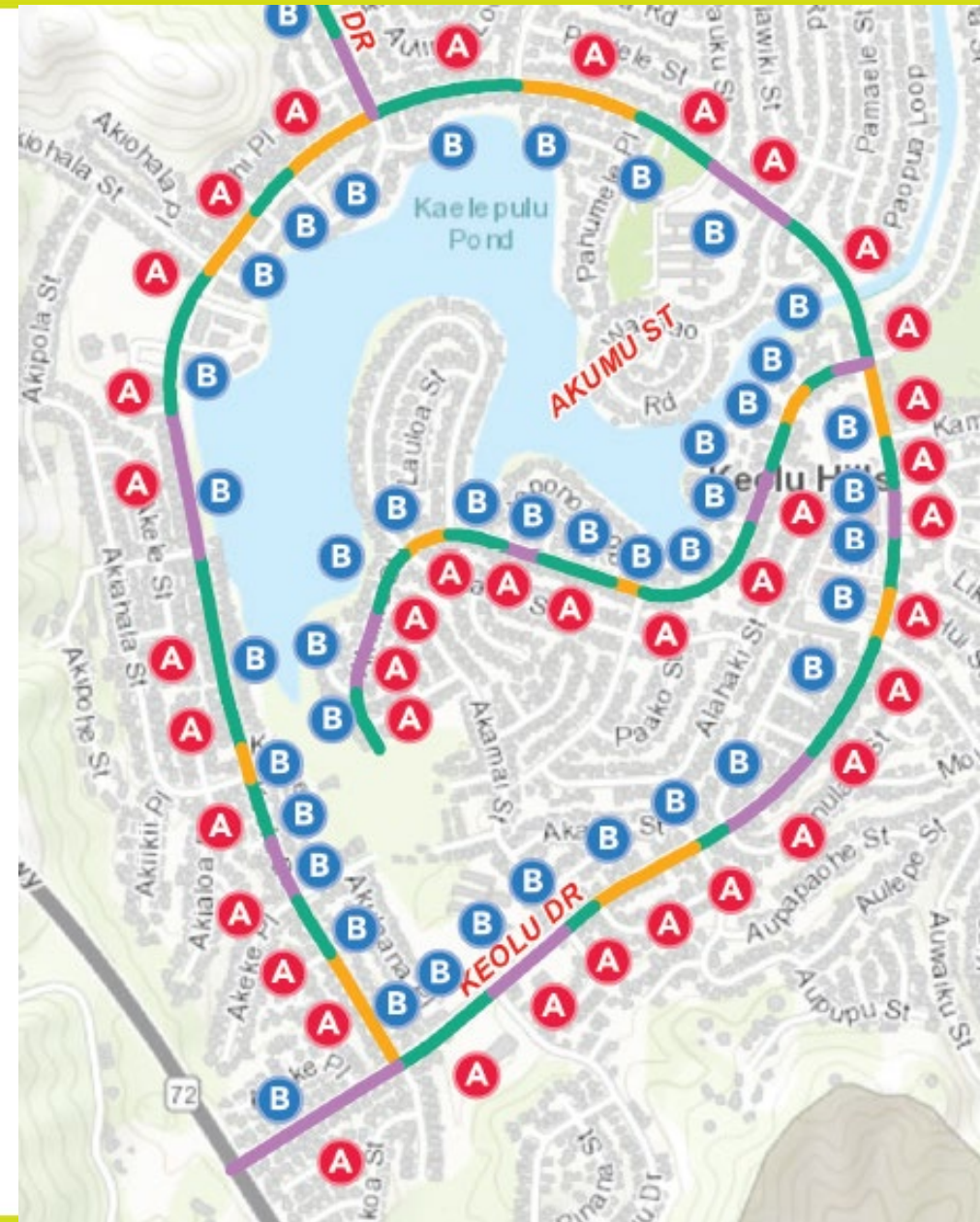




May 15, 2024: After a stormwater deposited sediment into the lake


Street Sweeping

- After 10+ years of community requests
- Regular sweeping will start in early 2025
- “No Parking” signs to be posted
- Each side of route done once a month





Outreach to Community and Government

- ELRA board members attend every Kailua Neighborhood Board (KNB) monthly meeting
 - Board members attend KNB's Waterquality subcommittee monthly meetings
 - Met with representatives of C&C Honolulu Dept of Facility Maintenance (DFM)
 - Met with Gene Albano, Director of DFM in his office
 - Took the Gene Albano of DFM, and Randall Wakumoto of Stormwater Maintenance for tour of stream and lake pollution problem areas
 - Met with DLNR representatives to discuss siphon project
 - Assisted students and researchers of HPU and UH with access and information
 - Advocated for effective use of stormwater improvement funds
- 

C&C Stormwater Demonstration Project

- ELRA advocated for more effective use of \$2.1 million in CIP funding for cleaning stormwater
- ELRA, Kailua Neighborhood Board and residents objected to selected project
- Project will impact only 9 acres of runoff from area that does need to be cleaned
- Community unable to stop DFM from proceeding



Proposed alternate uses of funds

Project constraints from DFM: Timeframe to implement, Maintenance requirements, Effectiveness, and Costs

Project	Timeframe	Maintenance	Effective	Cost to benefit	Improved acres
Proposed DFM project	●	●	—	—	9
New Berm at Kaopa Basin	●	●	●	●	300+
Akumu Street Hydrodynamic separator	—	●	●	●	100+
BMP project at bottom of Akiohala lined channel	●	●	●	●	138
More curb inlet screens and trash collection boxes	●	●	●	●	NA


Looking ahead

- Recommend building berm & restoring Kaopa basin to functioning silt basin
- City could possibly purchase the conservation-zoned land
- Convert to small community or dog park






Research in the Kailua waterways & bay

- Group from Stanford testing pathogen content in waterways and bay
 - Group from UH testing for microbial content of waterways
 - Group from HPU studying impact of Genki Balls in Hamakua Stream
 - ELRA continues to monitor lake water conditions through contract with Pacific American Foundation and work done by Derek Esibill
-- the 2024 report will be posted to the website
- 



Oyster research and conservation

- UH Hilo Pacific Aquaculture and Coastal Resources Center scientists visited lake in August
 - Aimed to collect oysters for breeding program in Hilo
 - Were only able to find and collect 3 oysters
 - These were flown to Hilo where they will breed
 - An oyster from collected from the lake several years ago is still alive and producing spat in Hilo
- 



Lake Safety and Rules

Mike Compton



Lake Safety and Rules

Mike Compton, ELRA's Safety Officer, patrols the lake for the safety of everyone on the lake and to prevent illegal trespassers



The lake's safety boat

Lake Safety and Rules

There are a few items we would like to emphasize for everyone's safety

- All fishing and crabbing is "Catch and Release"
- Except: Barracuda larger than 24" may be kept
- Send photo of kept fish to: elrasafety@gmail.com



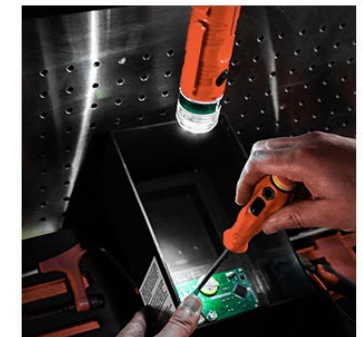
Use of barbless hooks helps protect the fish.

Safety Officer's Report

Lights are required after sunset

- See and be seen
- Example of boat light:
 - Barge, Kayak or SUP light
 - AAA batteries
 - Suction and magnetic
 - About \$16 on-line

Goodsmann Flashlight All Round Signal Light for Boat Kayak with Suction Cup & Magnetic Base



Safety Officer's Report

Children must wear PFDs

- Hawaii State Law **REQUIRES** all children less than 13 to **WEAR** a PFD anytime they are on a vessel of any type
- Class II PFD is best
 - Design will support the head above water
 - \$30 On-line
 - Could be best \$30 a parent ever spends



Safety Officer's Report

Required ELRA Stickers

- ELRA rules require for all types of watercraft
- Stickers help us identify trespassers and return wandering boats
- Powered boats must be covered by insurance
 - Most homeowner's insurance does cover, but check yours!



Safety Officer's Thoughts

- Complete rules located on the ELRA website
- No reports of theft from the Lake or stolen motors
- Contact for concerns
 - ELRAsafety@gmail.com
 - Phone: 858-247-1138

Kaelepulu Pond | ELRA

HOME GENERAL INFORMATION ENVIRONMENTAL **1** ELRA CONTACT

ASSOCIATION BYLAWS

2 LAKE USE RULES

MINUTES

BOARD MEMBERS

FEES, BUYER & SELLER INFO

DPP

ARTICLES OF INCORPORATION

DEED AND AGREEMENT

Aloha from the Enchanted Lake Residents Association!

We support initiatives that restore the quality of the Kaelepulu and Kawainui waterways for the benefit of the fish,



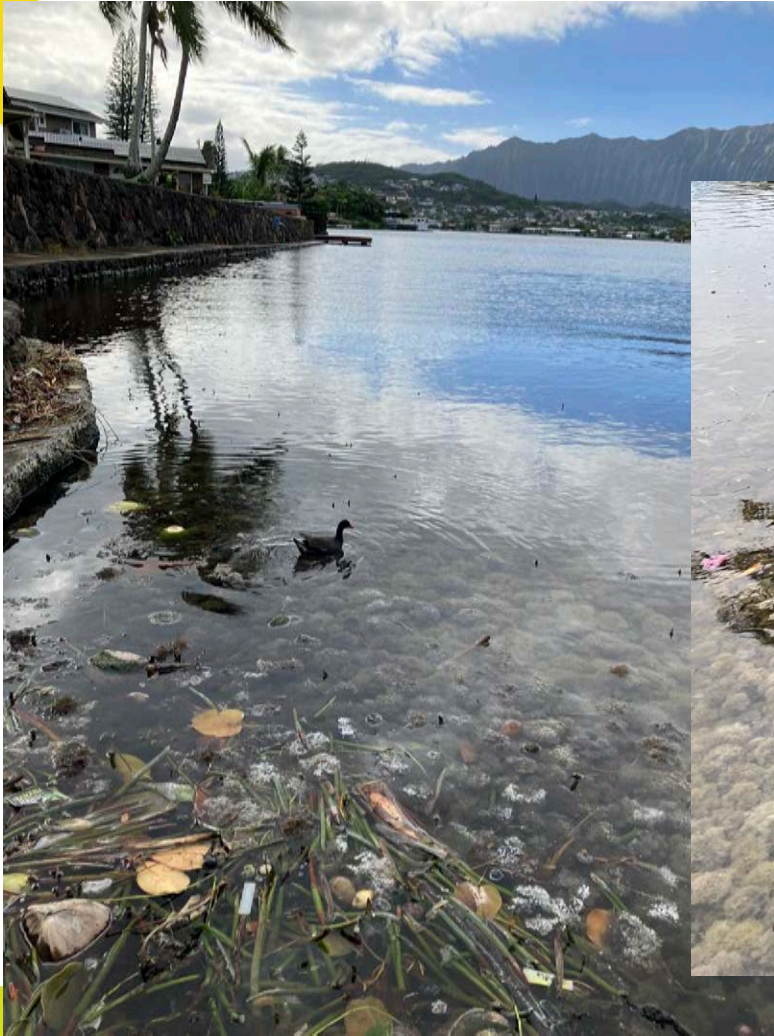
Lake Cleanups and Mangrove Removal

Greg Colbert



Lake Cleanups

Sean Connell - Regular Monthly Cleanups



Lake Cleanups



Sean Connell - Regular Monthly Cleanups



Lake Cleanups

Old Security Boat Dock Disassembled



Lake Cleanups

Kimo's Cove - Before Cleanup



Lake Cleanups

Kimo's Cove - Major Cleanup



Lake Cleanups

Kimo's Cove - Major Cleanup





After the cleanup



Lake Cleanups

Lake work barges were well used



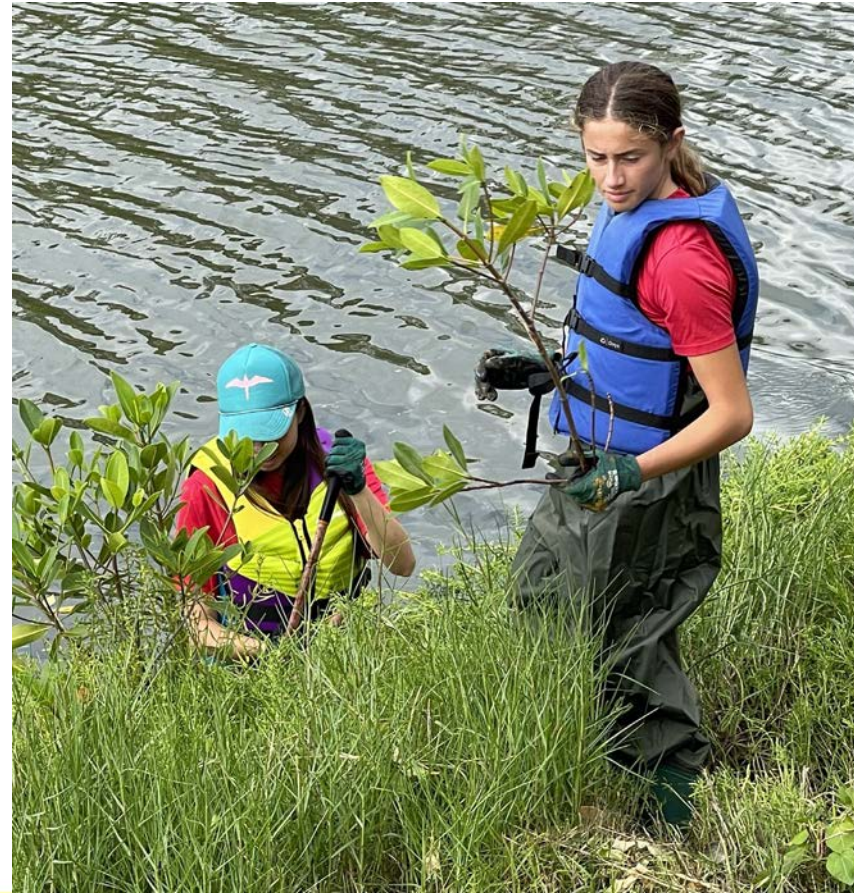
Lake Cleanups

- Algae removed with EcoHarvester and dried on lake barges
- Growth increased after the long berm opening in August



Mangrove Removal

Eagle Scout Mangrove Removal



Mangrove Removal

Sean Connell mangrove removal: Before and after





Dredging

Greg Colbert

Our Key Objective

Primary Dredge Area






We may have found a site. . .

We are in current discussions with a land-owner who has property near the lake that would be suitable for disposal of our dredge materials. We hope to make an announcement soon.

We have at least one proposal for dredging that may meet our needs and expect at least one further proposal

Discussions are on-going and sharing too much information at this point may not be productive. We expect to call special meetings during the next calendar year to share plans and receive comment from lake members.





Kaelepulu Wetland Project

Hugo de Vries



Improve shallow water nursery habitat and waterways in the wetland

- Received a grant
- U.S Fish and Wildlife Services, Fisheries Habitat Restoration Program
- Project completed Sept. 2024
- Planned to coincide with ELRA dredging



Small Excavator – big results







Early in project



Completed project







Parting Notes

Greg Colbert



ADJOURN

Mahalo for Joining Us!